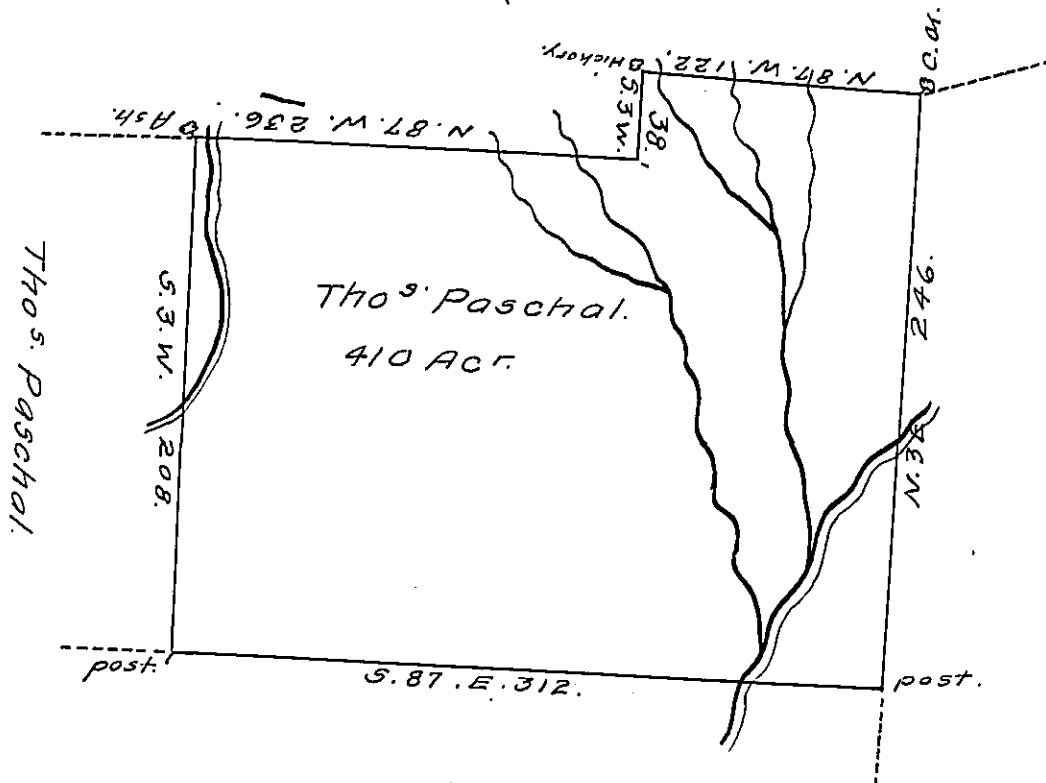


122  
121  
120  
119  
118  
117  
116  
115  
114  
113  
112  
111  
110  
109  
108  
107  
106  
105  
104  
103  
102  
101  
100  
99  
98  
97  
96  
95  
94  
93  
92  
91  
90  
89  
88  
87  
86  
85  
84  
83  
82  
81  
80  
79  
78  
77  
76  
75  
74  
73  
72  
71  
70  
69  
68  
67  
66  
65  
64  
63  
62  
61  
60  
59  
58  
57  
56  
55  
54  
53  
52  
51  
50  
49  
48  
47  
46  
45  
44  
43  
42  
41  
40  
39  
38  
37  
36  
35  
34  
33  
32  
31  
30  
29  
28  
27  
26  
25  
24  
23  
22  
21  
20  
19  
18  
17  
16  
15  
14  
13  
12  
11  
10  
9  
8  
7  
6  
5  
4  
3  
2  
1  
0



Jacob Downing.  
I-356'

By virtue of a warrant dated 24<sup>th</sup>. Decem<sup>br</sup>. 1792 Surveyd the 20<sup>th</sup>. of April 1792 Unto Tho<sup>s</sup>. Paschal the above described Tract of Four hundred and ten Acres of Land and usual Allow. Situated on the East Branch of Fishing Creek at the foot of the Bald Mountain in Luzerne County.

To Daniel Brodhead, Esq<sup>r</sup> }  
Surv<sup>r</sup>. Gen<sup>l</sup>. of Pensyl<sup>a</sup>. }

By Wm. Montgomery, Dy. S<sup>r</sup>.

N 13

IN TESTIMONY that the above is a copy of the original remaining on file in the Department of Internal Affairs of Pennsylvania, made conformably to an Act of Assembly approved the 16th day of February, 1833, I have hereunto set my Hand and caused the Seal of said Department to be affixed at Harrisburg, this tenth day of October, 1910

*Henry Horick*  
Secretary of Internal Affairs.